

Industrial Training Zone (ITZ) eSeries Courses 47900-00

FESTO

LabVolt Series

Datasheet

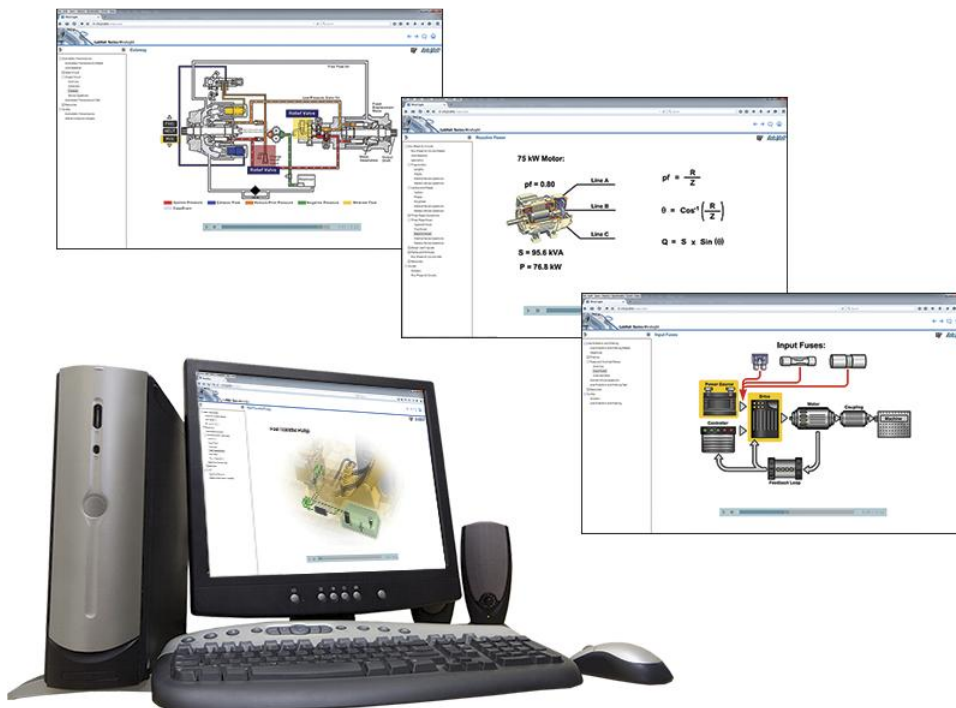


Table of Contents

General Description _____	2
Topic Coverage _____	2
Features & Benefits _____	2
List of Available Training Systems _____	2
Equipment Description _____	3

General Description

The Industrial Training Zone (ITZ) eSeries Courses deliver a broad range of fundamental and specialty industrial training courses designed to help build a competent, qualified, and efficient workforce.

The ITZ eSeries Courses provide a powerful training tool that can be used directly where training is required, e.g., in the classroom, at the plant, in the office. It offers all the important content in the appropriate context, comprehensive assessments, and the latest tools to evaluate performance. With seamless integration into MindSight, the ITZ eSeries Courses provide a multitude of ways to fulfil industrial training needs.

Topic Coverage

- Electricity
- Mechanics
- Fluid Power
- Manufacturing
- Programmable Logic Controllers
- Welding
- Safety
- Engines

Features & Benefits

- Broad range of fundamental and specialty industrial training courses
- Used by top-tier manufacturing, industrial, and technical associations
- Comprehensive assessments
- Seamless integration within the Mind-Sight learning and content management system (LCMS)
- Courses are available on third-party LCMS or in stand-alone

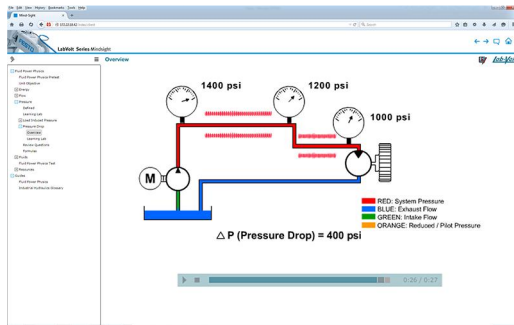
List of Available Training Systems

Qty	Description	Model number
1	Industrial Hydraulics ITZ - eSeries _____	585432 (47901-S0)
1	Industrial Pneumatics ITZ - eSeries _____	585447 (47902-S0)
1	Industrial Electrical ITZ - eSeries _____	585458 (47903-S0)
1	Industrial Mechanical ITZ - eSeries _____	585471 (47904-S0)
1	Electrical Theory ITZ - eSeries _____	585483 (47905-S0)
1	Mobile Hydraulics ITZ - eSeries _____	585498 (47906-S0)
1	Mobile Electrical ITZ - eSeries _____	585515 (47907-S0)
1	AC/DC Motors and Drives ITZ - eSeries _____	585530 (47908-S0)
1	Pneumatic Specialist ITZ - eSeries _____	585539 (47909-S0)
1	PLC Fundamentals ITZ - eSeries _____	585550 (47910-S0)
1	Industrial Safety ITZ - eSeries _____	585589 (47912-S0)

Qty	Description	Model number
1	Diesel Engines ITZ - eSeries _____	585599 (47913-S0)
1	Marine Diesel Engines ITZ - eSeries _____	585611 (47914-S0)
1	Gas Turbine Engines ITZ - eSeries _____	585618 (47915-S5)
1	Advanced Hydraulics ITZ - eSeries _____	585625 (47917-S0)
1	Brushless DC Motors ITZ - eSeries _____	585631 (47918-S0)

Equipment Description

Industrial Hydraulics ITZ - eSeries 585432 (47901-S0)



The Industrial Hydraulics course covers the components, functions, and interactions of hydraulic systems. It describes the various components found in a typical hydraulic system and how these components function and interact with each other. It explains the operation of hydraulic pumps, actuators, and pressure controls, as well as directional, flow,

and modular control valves. The course also covers the basic physics laws as they apply to fluid power, as well as the symbols used in hydraulic schematics. Finally, it fully describes maintenance and troubleshooting practices for hydraulic systems and their accessories.

The Industrial Hydraulics course is fully integrated into the Mind-Sight Learning and Content Management System, Model 47513.

The following ordering options are available for this course:

- 47901-S: Industrial Hydraulics ITZ – eSeries (50 Users, First Year License)
- 47901-N: Industrial Hydraulics ITZ – eSeries (50 Users, Subsequent Year License)
- 47901-P: Industrial Hydraulics ITZ – eSeries (50 Users, Perpetual License)
- 47901-F: Industrial Hydraulics ITZ – SCORM

Topic Coverage

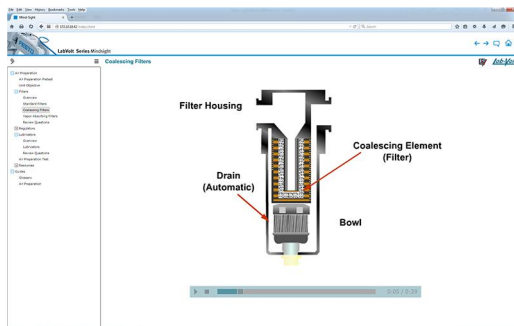
- Industrial Hydraulics Physics
- Pumps
- Actuators
- Pressure Control
- Directional Control
- Check Valves
- Flow Control Valves
- Modular Control Valves
- Fluid Conditioning
- Check Valves

- Accessory Components
- Fluid Conductors
- Understanding Schematics
- Basic System Design

Specifications

Parameter	Value
Computer Requirements	A currently available personal computer running under one of the following operating systems: Windows® 7 or Windows® 8.

Industrial Pneumatics ITZ - eSeries 585447 (47902-S0)



The Industrial Pneumatics course covers the components, functions, and interactions of pneumatic systems. It describes the various components found in a typical pneumatic system and how these components function and interact with each other. It explains the operation of pneumatic compressors, air dryers, actuators, and airline conductors, as well as

vacuum, distribution, and directional controls. The course also covers the basic physics laws as they apply to air power, as well as the symbols used in pneumatic schematics. Finally, it fully describes maintenance and troubleshooting practices for pneumatic systems and their accessories.

The Industrial Pneumatics course is fully integrated into the Mind-Sight Learning and Content Management System, Model 47513.

The following ordering options are available for this course:

- 47902-S: Industrial Pneumatics ITZ – eSeries (50 Users, First Year License)
- 47902-N: Industrial Pneumatics ITZ – eSeries (50 Users, Subsequent Year License)
- 47902-P: Industrial Pneumatics ITZ – eSeries (50 Users, Perpetual License)
- 47902-F: Industrial Pneumatics ITZ – SCORM

Topic Coverage

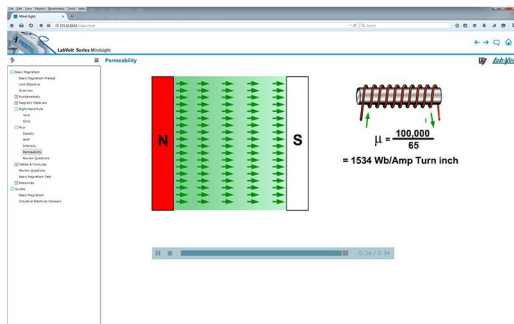
- Basic Physics
- Compressors
- Air Dryers
- Air Preparation
- Air Distribution
- Directional Control Valves
- Actuators
- Miscellaneous Valves
- Accessories
- Airline Conductors

- Vacuum
- Understanding Schematics

Specifications

Parameter	Value
Computer Requirements	A currently available personal computer running under one of the following operating systems: Windows® 7 or Windows® 8.

Industrial Electrical ITZ - eSeries 585458 (47903-S0)



The Industrial Electrical course describes the components, functions, and interactions of electrical systems. It covers various topics related to electrical systems: circuits, basic magnetism, circuit components, and electrical testers. The course also explains the formulas, laws, and basic terminology of electricity. The Industrial Electrical course is specially

designed to teach the basic principles of electrical systems directly where it is required.

The Industrial Electrical course is fully integrated into the Mind-Sight Learning and Content Management System, Model 47513.

The following ordering options are available for this course:

- 47903-S: Industrial Electrical ITZ – eSeries (50 Users, First Year License)
- 47903-N: Industrial Electrical ITZ – eSeries (50 Users, Subsequent Year License)
- 47903-P: Industrial Electrical ITZ – eSeries (50 Users, Perpetual License)
- 47903-F: Industrial Electrical ITZ – SCORM

The Industrial Electrical course is available in different versions:

- English with Metric Units
- English with Imperial Units

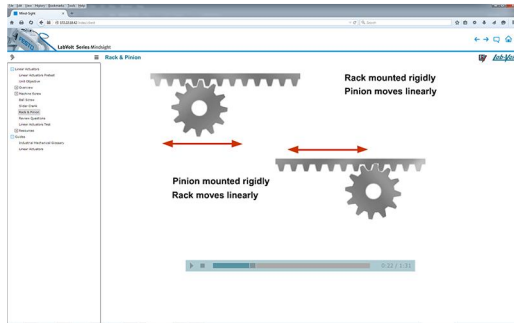
Topic Coverage

- Electrical Fundamentals
- Circuit Fundamentals
- Circuit Analysis
- Basic Magnetism
- Circuit Components
- Electrical Testers

Specifications

Parameter	Value
Computer Requirements	A currently available personal computer running under one of the following operating systems: Windows® 7 or Windows® 8.

Industrial Mechanical ITZ - eSeries 585471 (47904-S0)



The Industrial Mechanical course covers the components, functions, and interactions of mechanical systems. It describes the various components found in a typical mechanical system and how these components function and interact with each other. It explains the operation of linear actuators, clutches, brakes, bearings, gears, and drives. The course also

covers the basic physics laws as they apply to mechanical systems, as well as the symbols used in mechanical schematics. Finally, it fully describes maintenance and troubleshooting practices for mechanical systems and their accessories.

The Industrial Mechanical course is fully integrated into the Mind-Sight Learning and Content Management System, Model 47513.

The following ordering options are available for this course:

- 47904-S: Industrial Mechanical ITZ – eSeries (50 Users, First Year License)
- 47904-N: Industrial Mechanical ITZ – eSeries (50 Users, Subsequent Year License)
- 47904-P: Industrial Mechanical ITZ – eSeries (50 Users, Perpetual License)
- 47904-F: Industrial Mechanical ITZ – SCORM

The Industrial Electrical course is available in different versions:

- English with Metric Units
- English with Imperial Units

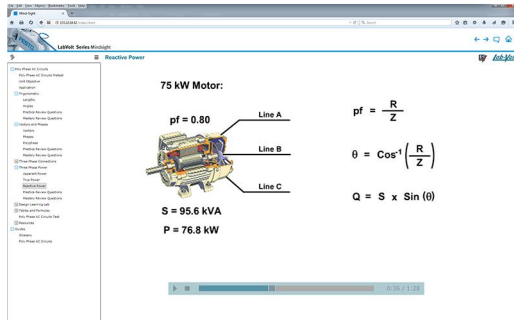
Topic Coverage

- Basic Physics
- Linear Actuators
- Clutches
- Brakes
- Clutch/Brake Combinations
- Bearings
- Gears
- Drives
- Couplings

Specifications

Parameter	Value
Computer Requirements	A currently available personal computer running under one of the following operating systems: Windows® 7 or Windows® 8.

Electrical Theory ITZ - eSeries 585483 (47905-S0)



The Electrical Theory course provides an interactive training experience designed to teach the fundamental principles behind electrical systems. The course begins with the basic concepts: atoms, charge, voltage, and current. The course then continues with an in-depth, theoretical approach to circuit analysis, basic magnetism, magnetic induction, and single- and

poly-phase ac power circuits. The course theory-based, and is designed to train electrical technicians.

The Electrical Theory course is fully integrated into the Mind-Sight Learning and Content Management System, Model 47513.

The following ordering options are available for this course:

- 47905-S: Electrical Theory ITZ – eSeries (50 Users, First Year License)
- 47905-N: Electrical Theory ITZ – eSeries (50 Users, Subsequent Year License)
- 47905-P: Electrical Theory ITZ – eSeries (50 Users, Perpetual License)
- 47905-F: Electrical Theory ITZ – SCORM

The Electrical Theory course is available in different versions:

- English with Metric Units
- English with Imperial Units

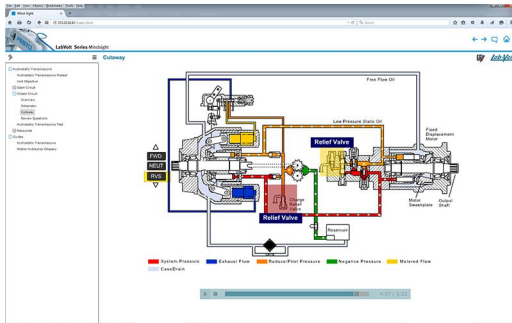
Topic Coverage

- Fundamentals
- Basic Physics
- Circuit Fundamentals
- Circuit Analysis
- Basic Magnetism
- Magnetic Circuits
- Single-Phase AC Circuits
- Magnetic Induction
- Poly-phase AC Circuits

Specifications

Parameter	Value
Computer Requirements	A currently available personal computer running under one of the following operating systems: Windows® 7 or Windows® 8.

Mobile Hydraulics ITZ - eSeries 585498 (47906-S0)



The Mobile Hydraulics course provides an interactive training experience designed to teach the fundamental principles behind hydraulic systems of mobile equipment. It explains the various physics laws related to hydraulic power, and describes the hydraulic components and circuits associated with these systems. The course covers the basics of hydrostatic

transmissions, valves, and maintenance systems common to almost all combustion engine vehicles. Finally, it also covers the symbols and language of schematics, for a thorough knowledge of hydraulic systems.

The Mobile Hydraulics course is fully integrated into the Mind-Sight Learning and Content Management System, Model 47513.

The following ordering options are available for this course:

- 47906-S: Mobile Hydraulics ITZ – eSeries (50 Users, First Year License)
- 47906-N: Mobile Hydraulics ITZ – eSeries (50 Users, Subsequent Year License)
- 47906-P: Mobile Hydraulics ITZ – eSeries (50 Users, Perpetual License)
- 47906-F: Mobile Hydraulics ITZ – SCORM

The Mobile Hydraulics course is available in different versions:

- English with Metric Units
- English with Imperial Units
- Spanish with Metric Units

Topic Coverage

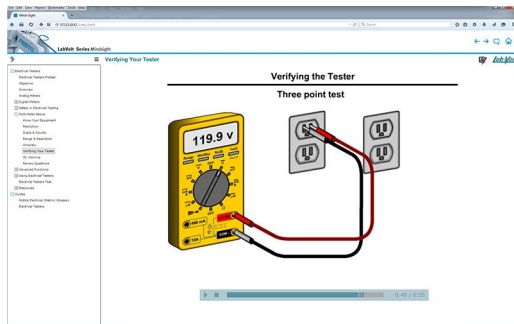
- Fluid Power Physics
- Pumps
- Actuators
- Hydrostatic Transmissions
- Pressure Control
- Directional Control Valves
- Flow Control Valves
- Modular Control Valves
- Fluid Conditioning
- Check Valves

- Accessory Components
- Fluid Conductors
- Understanding Schematics

Specifications

Parameter	Value
Computer Requirements	A currently available personal computer running under one of the following operating systems: Windows® 7 or Windows® 8.

Mobile Electrical ITZ - eSeries 585515 (47907-S0)



The Mobile Electrical course provides an interactive training experience designed to teach the fundamental principles behind electrical systems of mobile equipment. It explains the various physics laws related to electrical power, and describes the basic terminology and formulas behind electrical systems. The course covers the basic electrical system

common to almost all combustion engine vehicles, and how the battery, charging, and starting systems function and interact with each other. Finally, it also covers the basics of digital multimeters and their use for various electrical tests.

The Mobile Electrical course is fully integrated into the Mind-Sight Learning and Content Management System, Model 47513.

The following ordering options are available for this course:

- 47907-S: Mobile Electrical ITZ – eSeries (50 Users, First Year License)
- 47907-N: Mobile Electrical ITZ – eSeries (50 Users, Subsequent Year License)
- 47907-P: Mobile Electrical ITZ – eSeries (50 Users, Perpetual License)
- 47907-F: Mobile Electrical ITZ – SCORM

The Mobile Electrical course is available in different versions:

- English with Metric Units
- English with Imperial Units
- Spanish with Metric Units

Topic Coverage

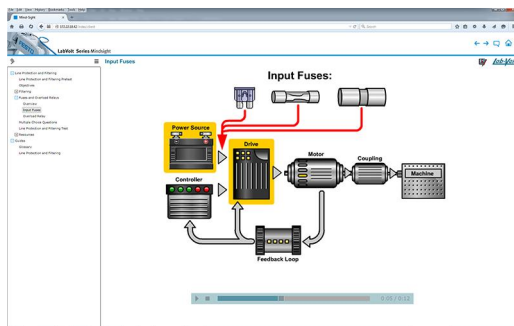
- Electrical Fundamentals
- Circuit Fundamentals
- Circuit Analysis
- Basic Magnetism

- Circuit Components
- Electrical Testers
- Charging and Starting Systems

Specifications

Parameter	Value
Computer Requirements	A currently available personal computer running under one of the following operating systems: Windows® 7 or Windows® 8.

AC/DC Motors and Drives ITZ - eSeries 585530 (47908-S0)



The AC/DC Motors and Drives course provides an interactive training experience designed to teach the fundamental principles behind electrical motors and drives. It explains how to identify and calculate the speed, torque, and horsepower of a motor, how motors and drives operate, and how to identify the hardware and firmware involved in

their operation. The course teaches how to match system components to their respective applications and covers the safety considerations associated with operating electromechanical systems.

The AC/DC Motors and Drives course is fully integrated into the Mind-Sight Learning and Content Management System, Model 47513.

The following ordering options are available for this course:

- 47908-S: AC/DC Motors and Drives ITZ – eSeries (50 Users, First Year License)
- 47908-N: AC/DC Motors and Drives ITZ – eSeries (50 Users, Subsequent Year License)
- 47908-P: AC/DC Motors and Drives ITZ – eSeries (50 Users, Perpetual License)
- 47908-F: AC/DC Motors and Drives ITZ – SCORM

The AC/DC Motors and Drives course is available in different versions:

- English with Metric Units
- English with Imperial Units

Topic Coverage

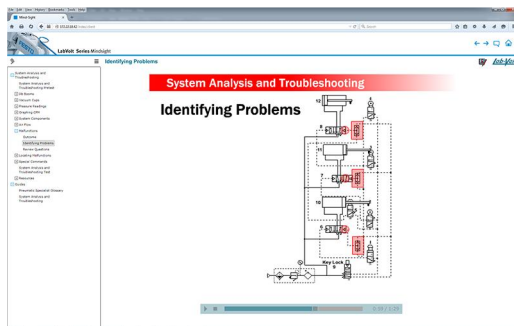
- System Components
- AC/DC Motors
- Selecting a Replacement Motor or Drive
- Line Protection and Filtering
- Electrostatic Concepts
- AC/DC Drive Hardware
- AC & DC Braking

- Testing the System
- Checking the System
- Using the HIM with the Drive
- Selecting a Drive

Specifications

Parameter	Value
Computer Requirements	A currently available personal computer running under one of the following operating systems: Windows® 7 or Windows® 8.

Pneumatic Specialist ITZ - eSeries 585539 (47909-S0)



The Pneumatic Specialist course provides an interactive training experience designed to teach the concepts related to the successful design and interaction of pneumatic systems as a certified pneumatic specialist. It prepares students to pass the Pneumatic Specialist Certified test. The computer-based course includes video segments, animated illustrations

of pneumatic systems, and comprehensive training from some of the foremost teachers of pneumatic certification. It also covers system analysis and troubleshooting, system design, component application, air compression and preparation.

The Pneumatic Specialist course is fully integrated into the Mind-Sight Learning and Content Management System, Model 47513.

The following ordering options are available for this course:

- 47909-S: Pneumatic Specialist ITZ – eSeries (50 Users, First Year License)
- 47909-N: Pneumatic Specialist ITZ – eSeries (50 Users, Subsequent Year License)
- 47909-P: Pneumatic Specialist ITZ – eSeries (50 Users, Perpetual License)
- 47909-F: Pneumatic Specialist ITZ – SCORM

The Pneumatic Specialist course is only available in English with Imperial Units.

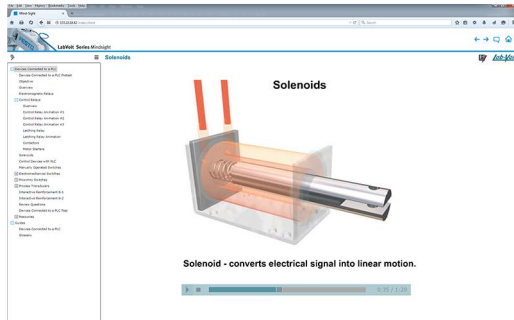
Topic Coverage

- Load and Motion Control
- System Analysis & Troubleshooting
- System Design
- Component Application
- Air Compression & Preparation

Specifications

Parameter	Value
Computer Requirements	A currently available personal computer running under one of the following operating systems: Windows® 7 or Windows® 8.

PLC Fundamentals ITZ - eSeries 585550 (47910-S0)



The PLC Fundamentals course provides an interactive training experience comprising 3D simulations, quizzes, and tests designed to teach the fundamental principles behind programmable logic controllers (PLCs). It describes the hardware, firmware, and software related to PLCs. The course explains which PLC is used for each job, how to connect devices to a

PLC, and how to read and write the basic PLC ladder-logic software programs. It is designed to provide students with a sound formation in automation control and related components.

The PLC Fundamentals course is fully integrated into the Mind-Sight Learning and Content Management System, Model 47513.

The following ordering options are available for this course:

- 47910-S: PLC Fundamentals ITZ – eSeries (50 Users, First Year License)
- 47910-N: PLC Fundamentals ITZ – eSeries (50 Users, Subsequent Year License)
- 47910-P: PLC Fundamentals ITZ – eSeries (50 Users, Perpetual License)
- 47910-F: PLC Fundamentals ITZ – SCORM

The PLC Fundamentals course is available in different versions:

- English with Imperial Units
- Spanish with Imperial Units

Topic Coverage

- What is a PLC
- PLC Hardware
- How a PLC is Structured
- How to Program a PLC
- Devices Connected to a PLC
- How to Use Timers
- How to Use Counters

Specifications

Parameter	Value
Computer Requirements	A currently available personal computer running under one of the following operating systems: Windows® 7 or Windows® 8.

Industrial Safety ITZ - eSeries 585589 (47912-S0)



The Mobile Hydraulics course provides an interactive training experience focused on safety from a technician's perspective. It explains the safety standards and regulations common in most countries, as well as their requirements and recommendations. The course covers ten fundamental safety concerns in industrial, manufacturing, and construction

environments. It explains the reasoning behind standard safety procedures and recommended emergency procedures.

The Industrial Safety course is fully integrated into the Mind-Sight Learning and Content Management System, Model 47513.

The following ordering options are available for this course:

- 47912-S: Industrial Safety ITZ – eSeries (50 Users, First Year License)
- 47912-N: Industrial Safety ITZ – eSeries (50 Users, Subsequent Year License)
- 47912-P: Industrial Safety ITZ – eSeries (50 Users, Perpetual License)
- 47912-F: Industrial Safety ITZ – SCORM

The Industrial Safety course is only available in English with Imperial Units.

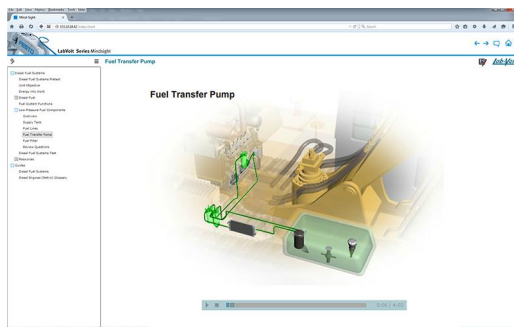
Topic Coverage

- Introduction to Safety
- Walking and Working Surfaces
- Prevention and Protection Plans
- Personal Protective Equipment
- Electrical Safety
- Machine Guarding
- Chemical Safety
- Powered Industrial Trucks
- Industrial Hygiene
- Ergonomics

Specifications

Parameter	Value
Computer Requirements	A currently available personal computer running under one of the following operating systems: Windows® 7 or Windows® 8.

Diesel Engines ITZ - eSeries 585599 (47913-S0)



The Diesel Engines course provides an interactive training experience designed to teach the fundamental principles behind Diesel Engines. It first explains combustion fundamentals, and gives a brief history of diesel engines. The course then describes the various components of a typical diesel engine and explains how these components function and

interact with each other. It fully describes fuel pumps, fuel injectors, and intake and exhaust systems, as well as the components of diesel fuel systems. Finally, it covers engine lubrication and cooling.

The Diesel Engines course is fully integrated into the Mind-Sight Learning and Content Management System, Model 47513.

The following ordering options are available for this course:

- 47913-S: Diesel Engines ITZ – eSeries (50 Users, First Year License)
- 47913-N: Diesel Engines ITZ – eSeries (50 Users, Subsequent Year License)
- 47913-P: Diesel Engines ITZ – eSeries (50 Users, Perpetual License)
- 47913-F: Diesel Engines ITZ – SCORM

The Diesel Engines course is available in different versions:

- English with Metric Units
- English with Imperial Units

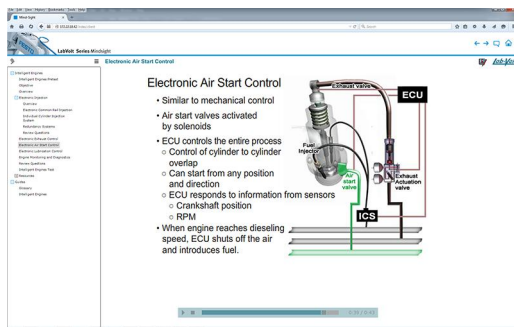
Topic Coverage

- Combustion Fundamentals
- Engine Components
- Air Intake and Exhaust
- Diesel Fuel Systems
- Fuel System Components
- Engine Lubrication
- Engine Cooling
- Electrical System
- Diesel Exhaust Emissions

Specifications

Parameter	Value
Computer Requirements	A currently available personal computer running under one of the following operating systems: Windows® 7 or Windows® 8.

Marine Diesel Engines ITZ - eSeries 585611 (47914-S0)



The Marine Diesel Engines course introduces students to the current top manufacturers and engines, as well as to the unique methods and related issues of large engine mounting, starting, fuel delivery, timing, lubrication, and exhaust. The course also discusses advances such as electronic engine monitoring and control, and dual fuel engines. Finally,

the course explains common trouble conditions that operators must be concerned with when operating very large diesel engines.

The Marine Diesel Engines course is fully integrated into the Mind-Sight Learning and Content Management System, Model 47513.

The following ordering options are available for this course:

- 47914-S: Marine Diesel Engines ITZ – eSeries (50 Users, First Year License)
- 47914-N: Marine Diesel Engines ITZ – eSeries (50 Users, Subsequent Year License)
- 47914-P: Marine Diesel Engines ITZ – eSeries (50 Users, Perpetual License)
- 47914-F: Marine Diesel Engines ITZ – SCORM

The Marine Diesel Engines course is available in different versions:

- English with Metric Units
- English with Imperial Units

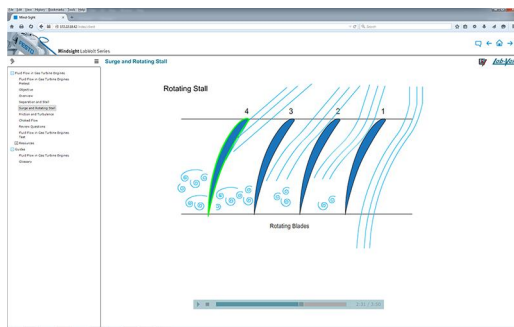
Topic Coverage

- Diesel Fundamentals
- Basic Types of Engines
- Engine Mounting
- Engine Starting
- Fuel Systems
- Engine Timing
- Engine Lubrication
- Engine Exhaust
- Intelligent Engines
- Trouble Conditions
- Dual Fuel Engines

Specifications

Parameter	Value
Computer Requirements	A currently available personal computer running under one of the following operating systems: Windows® 7 or Windows® 8.

Gas Turbine Engines ITZ - eSeries 585618 (47915-S5)



The Gas Turbine Engines course provides students a broad-based training in the basic physics laws, schematics, and system designs associated with gas turbine engines.

The Gas Turbine Engines course is fully integrated into the Mind-Sight Learning and Content Management System, Model 47513.

The following ordering options are available for this course:

- 47915-S: Gas Turbine Engines ITZ – eSeries (50 Users, First Year License)
- 47915-N: Gas Turbine Engines ITZ – eSeries (50 Users, Subsequent Year License)
- 47915-P: Gas Turbine Engines ITZ – eSeries (50 Users, Perpetual License)
- 47915-F: Gas Turbine Engines ITZ – SCORM

The Gas Turbine Engines course is only available in English with Metric Units.

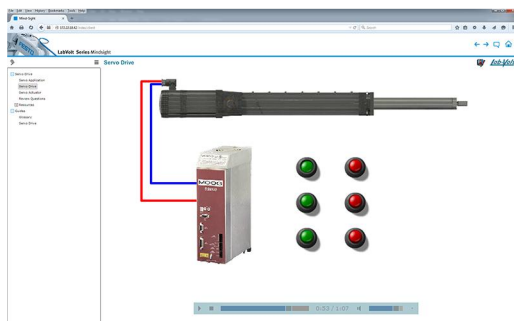
Topic Coverage

- The Gas Turbine Engine
- Gas Turbine Engine Components
- Fluid Flow
- Engine Performance and Specifications
- Gas Turbine Maintenance
- Monitoring

Specifications

Parameter	Value
Computer Requirements	A currently available personal computer running under one of the following operating systems: Windows® 7 or Windows® 8.

Advanced Hydraulics ITZ - eSeries 585625 (47917-S0)



The Advanced Hydraulics course provides an interactive training experience that covers advanced topics such as servo application, servo drive, servo actuator, rectification, filtering, bus discharge, MOSFET, power output, PWM, PID, loop closure, bottling, and edge guide.

The Advanced Hydraulics course is fully integrated into the Mind-Sight Learning and Content Management System, Model 47513.

The following ordering options are available for this course:

- 47917-S: Advanced trial Hydraulics ITZ – eSeries (50 Users, First Year License)
- 47917-N: Advanced Hydraulics ITZ – eSeries (50 Users, Subsequent Year License)
- 47917-P: Advanced Hydraulics ITZ – eSeries (50 Users, Perpetual License)
- 47917-F: Advanced Hydraulics ITZ – SCORM

The Advanced Hydraulics course is only available in English with Imperial Units.

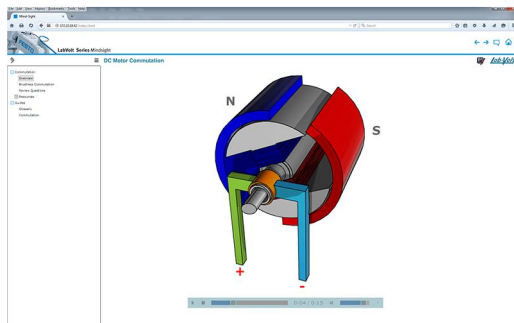
Topic Coverage

- Servo Drive
- Power Input Section
- Power Output Section
- Control Section
- Control Applications
- Input/Output

Specifications

Parameter	Value
Computer Requirements	A currently available personal computer running under one of the following operating systems: Windows® 7 or Windows® 8.

Brushless DC Motors ITZ - eSeries 585631 (47918-S0)



The Brushless DC Motors course provides an interactive training experience that explains how to determine and calculate motor speed, torque, and power, how motors and drives operate, and how to identify the hardware and firmware involved in motor operation. The course also covers the safety considerations related to electromechanical system

operation.

The Brushless DC Motors course is fully integrated into the Mind-Sight Learning and Content Management System, Model 47513.

The following ordering options are available for this course:

- 47918-S: Brushless DC Motors ITZ – eSeries (50 Users, First Year License)
- 47918-N: Brushless DC Motors ITZ – eSeries (50 Users, Subsequent Year License)
- 47918-P: Brushless DC Motors ITZ – eSeries (50 Users, Perpetual License)

- 47918-F: Brushless DC Motors ITZ – SCORM

The Brushless DC Motors course is only available in English with Imperial Units.

Topic Coverage

- Motor Components
- Commutation
- Motor Performance
- Selecting a Brushless Motor

Specifications

Parameter	Value
Computer Requirements	A currently available personal computer running under one of the following operating systems: Windows® 7 or Windows® 8.

Reflecting the commitment of Festo Didactic to high quality standards in product, design, development, production, installation, and service, our manufacturing and distribution facility has received the ISO 9001 certification.

Festo Didactic reserves the right to make product improvements at any time and without notice and is not responsible for typographical errors. Festo Didactic recognizes all product names used herein as trademarks or registered trademarks of their respective holders. © Festo Didactic Inc. 2021. All rights reserved.

Festo Didactic SE

Rechbergstrasse 3
73770 Denkendorf
Germany

P. +49(0)711/3467-0
F. +49(0)711/347-54-88500

Festo Didactic Inc.

607 Industrial Way West
Eatontown, NJ 07724
United States

P. +1-732-938-2000
F. +1-732-774-8573

Festo Didactic Ltée/Ltd

675 rue du Carbone
Québec QC G2N 2K7
Canada

P. +1-418-849-1000
F. +1-418-849-1666

www.labvolt.com

www.festo-didactic.com