

InTouch Runtime 3500 (Additional License) 587688 (3675-B0)



LabVolt Series

Datasheet

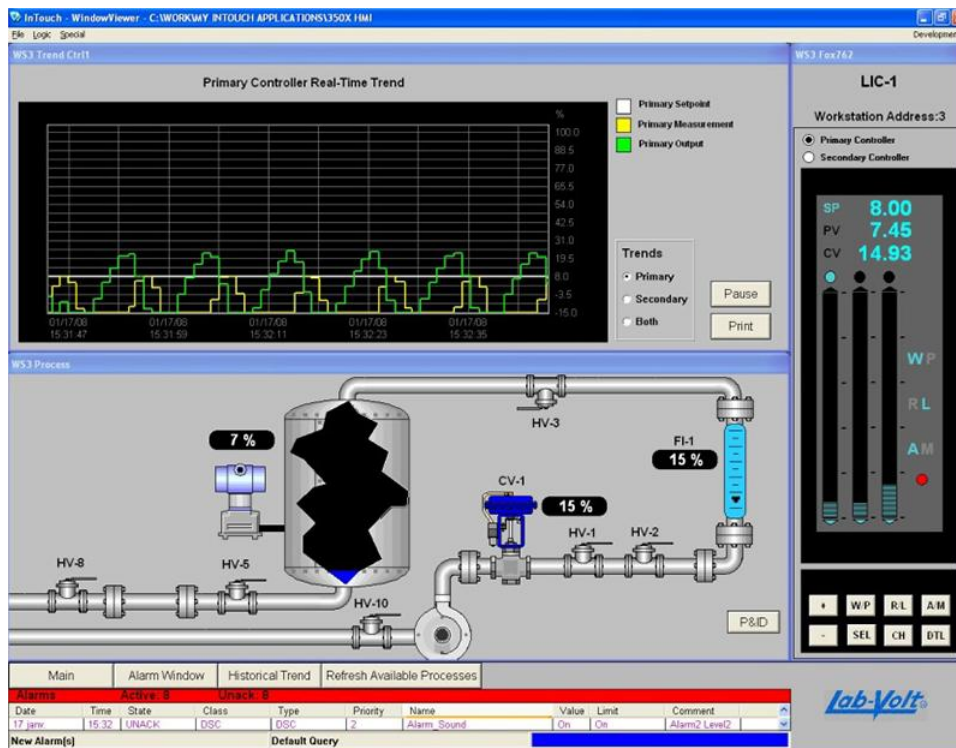


Table of Contents

General Description	2
Manual	2

General Description

InTouch is a human-machine interface (HMI) suite developed by Wonderware. It is used to design graphic interfaces for the control, optimization, and management of processes. InTouch can take charge and monitor most devices including the Foxboro controller, but PLCs are not supported.

InTouch Dev Studio is a complete development environment used to design and test HMI applications and distributed control system solutions. This software supports up to a thousand device tags and also has limited runtime capabilities which are sufficient for single-node deployment. An OPC server to exchange data with a Foxboro controller, Model 46960, is also included.

InTouch Runtime is also available to run HMI applications on a computer when no development or modification is required. The OPC Server for a Foxboro controller is included as well to communicate with the Foxboro controller. The following variants are available:

- 3675-A: InTouch Runtime 3500 (with Foxboro OPC Server)
- 3675-B: InTouch Runtime 3500 (Additional License)
- 3675-C: InTouch Dev Studio (with Foxboro OPC Server)
- 3675-D: InTouch Dev Studio (Additional License)

Manual

Description	Manual number
3500 Series Software Installation (Quick Start Guide)	585092 (85255-P0)

Reflecting the commitment of Festo Didactic to high quality standards in product, design, development, production, installation, and service, our manufacturing and distribution facility has received the ISO 9001 certification.

Festo Didactic reserves the right to make product improvements at any time and without notice and is not responsible for typographical errors. Festo Didactic recognizes all product names used herein as trademarks or registered trademarks of their respective holders. © Festo Didactic Inc. 2019. All rights reserved.

Festo Didactic SE

Rechbergstrasse 3
73770 Denkendorf
Germany

P. +49(0)711/3467-0
F. +49(0)711/347-54-88500

Festo Didactic Inc.

607 Industrial Way West
Eatontown, NJ 07724
United States

P. +1-732-938-2000
F. +1-732-774-8573

Festo Didactic Ltée/Ltd

675 rue du Carbone
Québec QC G2N 2K7
Canada

P. +1-418-849-1000
F. +1-418-849-1666

www.labvolt.com

www.festo-didactic.com